



CUNARD

DAILY PROGRAMME

QUEEN MARY 2

VOYAGE NUMBER: M404

Sunday 11 May 2014

Tonight's Dress Code: Formal
Formal: Dinner jacket, tuxedo or dark suit with tie for gentlemen.
Evening or cocktail dress for ladies.



AT SEA EN ROUTE TO NEW YORK



TIME CHANGE

Please be reminded that early this morning the ship's time was SET BACK ONE HOUR. This will be repeated tomorrow and clocks will be SET BACK ONE HOUR early on Monday morning. Please set your watches back again before retiring this evening Sunday 11 May.



FROM THE NAVIGATOR

The initial stages of our voyage across the Atlantic will have taken us from the Southern coast of England and out into the Celtic Sea. Additionally during this afternoon we will be crossing over the Maxwell Fracture Zone, which is a large undersea mountain range forming part of the Mid Atlantic Ridge. Here, depths can shallow out to less than 1,000 metres before deepening again quickly to over 3,500 metres which is approximately 1.9 miles on the opposite side.



SUNRISE AND SUNSET

Sunrise: 4.46am / Sunset: 8.15pm

NAUTICAL FACT OF THE DAY

BELL BOTTOMS

It is commonly believed that bell bottom trousers were introduced in 1817 to permit men to roll them above the knee when washing down the decks, and to make it easier to remove them in a hurry when forced to abandon ship or when washed overboard. The trousers may be used as a life preserver by knotting the legs.

QUEEN MARY 2'S NAMING CEREMONY

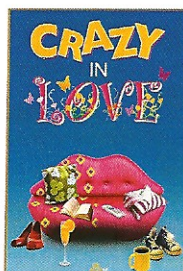
On Monday 12 January 2004 maritime history was made when RMS QUEEN MARY 2 left Southampton on her Maiden Voyage after being named by Her Majesty The Queen at a ceremony that has been acclaimed as the most spectacular event of its kind ever.

Broadcast on TV Ch. 42 from 12.00pm to 5.00pm and 7.00pm onwards

TONIGHT'S FEATURED ENTERTAINMENT

CRAZY IN LOVE

FEATURING THE
ROYAL CUNARD SINGERS & DANCERS



'Crazy in Love' highlights, with satirical humour, the eternal dilemma between men and women, the nitty gritty of life and the sparkle of romance. Featuring cameo scenes from the beginning of the relationship cycle, through comedy, heartbreak, reconciliation, absurdity and fun. 'Crazy In Love' is a show for anyone who ever fell in love – or is planning to! Presented by your Entertainment Director, Paul O'Loughlin.

At 8.45pm and 10.45pm Royal Court Theatre
decks 2 & 3, B stairway



CUNARD INSIGHTS SPECIAL PRESENTATION CELEBRITY SPEAKER

BEST-SELLING AUTHOR, LYNNE TRUSS

'Eats, Shoots & Leaves: The Zero Tolerance Approach to Punctuation'.

Presented by your Entertainment Director, Paul O'Loughlin.

At 2.00pm in the Royal Court Theatre,
decks 2 & 3, B stairway
Recorded and broadcast on TV Ch. 43
from 5.00pm onwards

CAPTAIN'S COCKTAIL PARTIES

Captain Kevin Oprey cordially invites all guests who dine in the Britannia Restaurant to join him and his Officers for cocktails in the Queens Room. The Captain will be receiving guests on the port side entrance, please enter via the Photo Gallery. Alternatively, guests not wishing to join the receiving line may enter the party via the Clarendon Fine Art Gallery on the starboard side. Please be sure to attend your designated cocktail party only. Out of respect for your fellow guests, the formal dress code for this evening will be strictly enforced.



First sitting: 5.15pm to 6.00pm
Second sitting: 7.45pm to 8.30pm
Queens Room deck 3, D stairway

Today's

DISCOVER...

...getting the most from your voyage

Perfume
Party



Wine
Tasting



Commodore
Club

TODAY'S ACTIVITIES

6am	6.00am	WAKE UP WITH PAUL TV show with your Entertainment Director, Paul O'Loughlin. TV Ch. 42 (repeated continuously until 12.00pm)	11am	11.15am	QUIZZICAL CORNER Golden Lion Pub, deck 2, C stairway (until 11.45am)
		QUEEN MARY 2'S NAMING CEREMONY From 12.00pm to 5.00pm and 7.00pm onwards on Stateroom TV channel 42.		11.15am	LINE DANCE CLASS Queens Room ♪, deck 3, D stairway (until 12.00pm)
8am	8.00am	CANYON RANCH FITNESSO Running club 1/3/5 miles. Previous sign-up required. Meet at Canyon Ranch Spa, deck 7, A stairway (until 8.30am)	12pm	12.00pm	EIGHT BELLS Grand Lobby, deck 3, C stairway
		8.30am CATHOLIC MASS Illuminations ♪, deck 3, A or B stairway (until 9.00am)		12.00pm	NAVIGATIONAL ANNOUNCEMENT Public Address System
9am	9.00am	CANYON RANCH FITNESSO Stretch and relax- full body stretch. Previous sign-up required. Queens Room ♪, deck 3, D stairway (until 9.30am)	1pm	12.15pm	LUNCHTIME MELODIES With harpist Fiona McGee. Chart Room, deck 3, C stairway (until 1.00pm)
		9.00am CROSSWORD AVAILABLE Library, deck 8 forward		12.15pm	PUB TIME MELODIES With pianist Simon Galfe. Golden Lion Pub, deck 2, C stairway (until 1.00pm)
9am	9.30am	BEGINNERS' BRIDGE CLASS - DAY 2 ConneXions Room 4 & 5, deck 2, A stairway (until 10.15am)	1pm	12.15pm	BALLROOM DANCE CLASS Beginners waltz with Ilona and Wilfried. Queens Room ♪, deck 3, D stairway (until 1.00pm)
		9.30am ISTUDY: COMPLIMENTARY SEMINAR Introduction to Photo Editing Software. ConneXions Room 6, deck 2, A stairway (until 10.00am)		12.30pm	POOLSIDE MUSIC WITH VIBZ Inclement weather venue: Pavilion Pool, deck 12, B stairway Terrace Pool, deck 8 aft (until 1.30pm)
10am	9.30am	PADDLE TENNIS TOURNAMENT 🏸 Tennis court, deck 13, A stairway (until 10.15am)	1pm	12.30pm	BINGO TICKET SALE Casino blackjack table outside the Golden Lion Pub (until 1.15pm)
		10.00am CUNARD INSIGHTS PRESENTATION Recorded and broadcast on TV Ch. 43 from 5.00pm onwards "My Life on the Queens." An illustrated talk on life as an Assistant Purser and Social Hostess. Presented by Ship Historian, Maureen Ryan. Illuminations ♪, deck 3, A or B stairway (until 10.45am)		1.00pm	PLANETARIUM FILM: 'PASSPORT TO THE UNIVERSE' Tickets are available from ConneXions, deck 2, A stairway, from 9.00am. Illuminations ♪, deck 3, A or B stairway (until 1.25pm)
10am	10.00am	CANYON RANCH LECTUREO Laying the Canvas to Beautiful Colour and Beautiful Hair - What is beautiful colour and beautiful hair? Join Maureen as she demonstrates various options to achieving the ultimate look. Winter Garden, deck 7, B stairway (until 10.45am)	1pm	1.00pm	LIVE PREMIER LEAGUE FOOTBALL Liverpool vs. Newcastle (Satellite permitting) Golden Lion Pub, deck 2, C stairway
		10.00am WATERCOLOUR ART CLASS There will be a one-time fee of \$35 for supplies. Limited to 25 guests. Chelsea Room, deck 1, B stairway (until 12.00pm)		1.30pm	PLANETARIUM FILM: 'PASSPORT TO THE UNIVERSE' Tickets are available from ConneXions, deck 2, A stairway, from 9.00am. Illuminations ♪, deck 3, A or B stairway (until 1.55pm)
10am	10.00am	CANYON RANCH FITNESSO Pilates - mat based all levels. Fitness pass & previous sign up required. Knightsbridge Room, deck 1, C stairway (until 10.45am)	2pm	2.00pm	CUNARD INSIGHTS PRESENTATION Recorded and broadcast on TV Ch. 43 from 5.00pm onwards 'Eats, Shoots & Leaves: The Zero Tolerance Approach to Punctuation'. Author, punctuation champion and humorist, Lynne Truss made the proper placement of a comma more meaningful, funny and entertaining than ever before. Her Number One international bestseller Eats, Shoots & Leaves turned the arcane subject into must- read material with her warm, reassuring and consistently amusing commentary. Truss's wit and love of language makes "sticklers" out of us all. Presented by Best-Selling Author, Lynne Truss. Royal Court Theatre, decks 2 & 3, B stairway (until 2.45pm)
		10.30am MORNING TRIVIA 🎲 Golden Lion Pub, deck 2, C stairway (until 11.00am)		2.00pm	WATERCOLOUR ART CLASS There will be a one-time fee of \$35 for supplies. Limited to 25 guests. Chelsea Room, deck 1, B stairway (until 4.00pm)
11am	10.30am	INTERMEDIATE BRIDGE CLASS ConneXions Room 4 & 5, deck 2, A stairway (until 11.15am)	2pm	2.00pm	COMPLIMENTARY GAMING LESSONS Empire Casino, deck 2, B or C stairway
		10.30am SOLO TRAVELLERS' WELCOME Meet other independent guests and the gentleman dance hosts. Chef's Galley, deck 7, C stairway (until 11.15am)		2.00pm	SNOWBALL JACKPOT BINGO Tickets sold outside the Queens Room port side from 1.30pm to 2.00pm. Queens Room, deck 3, D stairway (until 2.45pm)
11am	10.45am	ISTUDY: NEXT STEPS WORKSHOP Apple's iPhoto for Apple Mac computers. A \$15 fee applies. ConneXions Room 6, deck 2, A stairway (until 11.15am)	2pm	2.00pm	FLOWER ART CLASS Please note: a fee applies, sign up at the Purser's Desk. Kensington Room, deck 1, C stairway (until 3.30pm)
		11.00am INTERDENOMINATIONAL CHURCH SERVICE An Interdenominational Sunday church service will be held today with Deputy Captain Dariusz Gozdzik. Donation boxes for Seafarers' Charities will be placed outside the entrances to the Royal Court Theatre. Royal Court Theatre, decks 2 & 3, B stairway (until 11.45am)		2.00pm	PLANETARIUM FILM: 'PASSPORT TO THE UNIVERSE' Tickets are available from ConneXions, deck 2, A stairway, from 9.00am. Illuminations ♪, deck 3, A or B stairway (until 2.25pm)
11am	11.00am	SHUFFLEBOARD COMPETITION 🎱 Deck 13, port/starboard, A or B stairway (until 11.45am)	2pm	2.00pm	CANYON RANCH LECTUREO New Look, New You. Join our international hairstylist and make- up artist for fabulous make up tips for mature women. Winter Garden, deck 7, B stairway (until 2.45pm)
		11.00am H.STERN SEMINAR Chart Room, deck 3, C stairway (until 11.45am)		2.00pm	CANYON RANCH FITNESSO Legs, bum & tums - legs & core strength. Fitness pass & previous sign up required. Knightsbridge Room, deck 1, C stairway (until 2.45pm)
11am	11.00am	CANYON RANCH LECTUREO Maximise your Metabolism - Join our Fitness Instructor Stacey and learn more about body composition and nutrition to better understand your own unique metabolism. Winter Garden, deck 7, B stairway (until 11.45am)	2pm	2.00pm	DUPLICATE BRIDGE TOURNAMENT 🎴 ConneXions Room 4 & 5, deck 2, A stairway (until 4.00pm)

TODAY'S ACTIVITIES

2.15pm	DECK QUILTS TOURNAMENT Deck 12, port/ starboard side, B stairway (until 3.00pm)	5.00pm	CANYON RANCH FITNESS Indoor cycling - all levels. Fitness pass & previous sign up required. Knightsbridge Room, deck 1, C stairway (until 5.45pm)
2.15pm	iSTUDY: IPAD WORKSHOP Part 1 - Getting Started. A \$15 fee applies. ConneXions Room 6, deck 2, A stairway (until 3.15pm)	5.15pm	PIANIST SIMON GALFE Chart Room, deck 3, C stairway (until 6.00pm)
2.30pm	HOSTESS CORNER: NEEDLEWORK & KNITTING With Social Hostess Imogen. Please note that this is not a class. Champagne Bar, deck 3, Grand Lobby (until 3.30pm)	5.15pm	PIANIST DEREK CONLON Golden Lion Pub, deck 2, C stairway (until 6.00pm)
2.30pm	PLANETARIUM FILM: 'PASSPORT TO THE UNIVERSE' Tickets are available from ConneXions, deck 2, A stairway, from 9.00am. Illuminations, deck 3, A or B stairway (until 2.55pm)	6.30pm	PIANIST SIMON GALFE Chart Room, deck 3, C stairway (until 7.15pm)
2.30pm	\$1.00 MADNESS All card games are offered for only \$1.00! Empire Casino, deck 2, B or C stairway (until 3.30pm)	7.15pm	PIANIST DEREK CONLON Golden Lion Pub, deck 2, C stairway (until 8.00pm)
3.00pm	BOOK SIGNING: LYNNE TRUSS Book shop, deck 8, A stairway (until 3.45pm)	7.30pm	HARPIST FIONA MCGEE Chart Room, deck 3, C stairway (until 8.30pm)
3.00pm	DARTS COMPETITION Golden Lion Pub, deck 2, C stairway	7.30pm	PIANIST SIMON GALFE Commodore Club, deck 9, A stairway (until 8.30pm)
3.00pm	ART SEMINAR: THE ART OF INVESTMENT Clarendon Fine Art Gallery, deck 3L, C or D stairway (until 3.45pm)	7.45pm	DIXIELAND JAZZ With the Royal Court Theatre Orchestra. Winter Garden, deck 7, B stairway (until 8.30pm)
3.00pm	CANYON RANCH LECTURE Join the team for live demonstrations in Thai Massage, Shiatsu, Deep Tissue Massage, Trigger Point Therapy and Reflexology which are some of the most popular signature treatments from the award winning Canyon Ranch Spa Club. Mini treatments, promotional offers and delicious VOYA tea provided. Winter Garden, deck 7, B stairway (until 3.45pm)	8.00pm	EARLY EVENING TRIVIA Golden Lion Pub, deck 2, C stairway (until 8.30pm)
3.00pm	TEXAS HOLD'EM TOURNAMENT Please sign up at the Casino Cashiers from 10.00am - 3.00pm. Empire Casino, deck 2, B or C stairway	8.00pm	FILM: 'SAVING MR. BANKS' A doting father, Walt Disney promises his adoring daughters that he will bring their favorite fictional nanny Mary Poppins to the big screen. Little does Walt realize that surly author P.L. Travers has no intention of seeing her most famous creation bastardized on the big screen, a fact that makes keeping his promise a difficult endeavour. Years later, however, when Travers' book sales begin to slow, dwindling finances drive her to schedule a meeting with Disney to discuss the film rights to the beloved story. Illuminations, deck 3, A or B stairway (duration 125 minutes)
3.30pm	CUNARD INSIGHTS LECTURE Recorded and broadcast on TV Ch. 43 from 5.00pm onwards "Cunard's Edwardian Masterpieces: Lusitania (1906) and Mauretania (1907)." This illustrated lecture describes the design and history of two of the most remarkable ships ever built for Cunard, namely Lusitania and Mauretania. Come and see how with these ships Cunard maintained a competitive edge on the North Atlantic run at the turn of the 20th century and how Mauretania went on to be the fastest commercial ship in the world for 22 years. Presented by Naval Architect & Historian Dr Stephen Payne, OBE. Illuminations, deck 3, A or B stairway (until 4.15pm)	8.45pm	SHOWTIME: CRAZY IN LOVE Royal Court Theatre, decks 2 & 3, B stairway (until 9.30pm)
3.30pm	AFTERNOON TEA With pianist Campbell Simpson. Queens Room, deck 3, D stairway (until 4.30pm)	9.00pm	PRE-RECORDED STRICT TEMPO MUSIC Queens Room, deck 3, D stairway (until 9.45pm)
3.30pm	BUFFET AFTERNOON TEA Kings Court forward, starboard section (until 4.30pm)	9.00pm	TEXAS HOLD'EM Empire Casino, deck 2, B or C stairway (\$1/\$2 no limit cash game)
3.30pm	AFTERNOON TRIVIA Golden Lion Pub, deck 2, C stairway (until 4.00pm)	9.30pm	JAZZ CLUB With the Mark Hodgson Trio. Chart Room, deck 3, C stairway (until 12.30am)
3.30pm	COMPLIMENTARY GOLF COMPETITION 99 yards closest to the pin. Places are limited sign up is required. The Fairways, deck 12, B stairway, over 18s only (sign up from 9.00am)	9.30pm	PIANIST DEREK CONLON Golden Lion Pub, deck 2, C stairway (until 10.00pm)
4.00pm	CANYON RANCH FITNESS Energize your soles - Feet Exercise. Previous sign-up required. Knightsbridge Room, deck 1, C stairway (until 4.30pm)	9.45pm	BALLROOM AND LATIN DANCING Dance to the Queens Room Orchestra under the direction of Andrew Hillier, featuring vocalist Michel Chatier. Queens Room, deck 3, D stairway (until 12.00am)
4.00pm	FRIENDS OF BILL W. The Boardroom, deck 9, A stairway (until 4.45pm)	9.45pm	INTERNATIONAL BAND VIBZ G32, deck 3, D stairway (until 10.45pm)
4.00pm	iSTUDY: IPAD WORKSHOP Part 2 - Getting to Know Your iPad. A \$15 fee applies. ConneXions Room 6, deck 2, A stairway (until 5.00pm)	10.00pm	THE MARRIAGE GAME Golden Lion Pub, deck 2, C stairway (until 10.45pm)
5.00pm	FILM: 'SAVING MR. BANKS' Illuminations, deck 3, A or B stairway (duration 125 minutes)	10.00pm	PIANIST CAMPBELL SIMPSON Commodore Club, deck 9, A stairway (until 12.00am)
5.00pm	'LIVE @ 5' RADIO SHOW WITH DJ MARC TV Ch. 42 (until 7.00pm Call 23015 for requests and dedications)	10.30pm	FILM: 'SAVING MR. BANKS' Illuminations, deck 3, A or B stairway (duration 125 minutes)
5.00pm	FRIENDS OF DOROTHY LGBT Commodore Club, deck 9, A stairway (until 5.45pm)	10.45pm	SHOWTIME: CRAZY IN LOVE Royal Court Theatre, decks 2 & 3, B stairway (until 11.30pm)
		10.45pm	PIANIST DEREK CONLON Golden Lion Pub, deck 2, C stairway (until 12.00am)
		10.45pm	DJ MARC ROCK 'N' ROLL NIGHT G32, deck 3, D stairway (until 11.30pm)
		11.30pm	INTERNATIONAL BAND VIBZ G32, deck 3, D stairway (until 12.30am)
		12.00am	DANCE MUSIC FOR ENTHUSIASTS Queens Room, deck 3, D stairway (until 12.30am)
		12.30am	DJ MARC G32, deck 3, D stairway (until late)

All times and durations are subject to change. Some durations are dependant on participation.

SHIPBOARD INFORMATION

THE MOST FAMOUS OCEAN LINERS IN THE WORLD

QUEENS GRILL, PRINCESS GRILL AND BRITANNIA CLUB

Breakfast.....	8.00am to 9.30am
Lunch.....	12.00pm to 1.30pm
Dinner.....	6.30pm to 9.00pm

BRITANNIA RESTAURANT

Breakfast.....	8.00am to 9.30am
Lunch.....	12.00pm to 1.30pm
Early Dinner.....	6.00pm, last order 6.30pm
Late Dinner.....	8.30pm, last order 9.00pm
Wine Line.....	10.00am to 4.00pm
pre-order your wine for the voyage by calling 22062.	

TODD ENGLISH

A la carte charges apply. For reservations please dial 28026 between 10.00am & 4.00pm.

Lunch.....	12.00pm to 2.00pm
Dinner.....	6.30pm to 9.00pm

KINGS COURT BUFFET DECK 7

Continental Breakfast.....	4.00am to 6.30am
Full Breakfast.....	6.30am to 11.30am
Chef's Galley: Healthy Corner.....	7.00am to 10.00am
Lunch.....	11.30am to 3.00pm
Chef's Galley; Burger & Sandwich Station.....	11.30am to 3.00pm
Afternoon Snack, Forward Port.....	3.00pm to 5.30pm
Dinner Buffet: Deck 7 aft.....	5.30pm to 11.00pm
Chef's Galley: Pizza & Pasta Station.....	6.00pm to 10.00pm
Late Snack.....	11.00pm to 2.00am

KINGS COURT SPECIALITY A LA CARTE (B STAIRWAY)

A \$10 cover charge applies. For reservations please dial 25056.

La Piazza (starboard side).....	7.00pm to 9.00pm
---------------------------------	------------------

Fine Italian a la carte dining, our chefs prepare a fantastic Mediterranean feast.

BARS AND LOUNGES

Champagne Bar deck 3, Grand Lobby.....	11.00am to 12.00am
Chart Room deck 3, C stairway.....	10.00am to late
Commodore Club deck 9, A stairway.....	10.00am to late
Empire Casino Bar deck 2, C stairway.....	As per casino opening
Golden Lion Pub deck 2, C stairway.....	10.00am to late
Pub Lunch.....	12.00pm to 2.30pm
G32 deck 3, D stairway.....	9.30pm to the wee small hours (Guests under the age of 18 are not permitted in G32)
Pavilion Pool Bar deck 12, B stairway.....	10.00am to 7.00pm
Queen's Grill Lounge deck 7, D stairway, Grill guests only please.....	11.00am to 2.30pm & 6.00pm to 12.00am
Sir Samuel's (deck 3, C stairway).....	7.00am to 12.00am
Light Snacks served throughout the day until 5.00pm	
Terrace Pool Bar deck 8, D stairway.....	10.00am to 10.00pm (Weather permitting)
Winter Garden deck 7, B stairway.....	10.00am to 11.00pm

FACILITIES AND RETAIL

Bookshop & Library.....	9.00am to 6.00pm
Canyon Ranch.....	8.00am to 8.00pm
Clarendon Fine Art.....	10.00am to 10.00pm
Empire Casino.....	Cashier: 10.00am Tables: 12.00pm
Images Photo Gallery.....	10.00am to 9.00pm
Images Photo Shop.....	10.00am to 2.00pm
Internet Manager.....	9.00am to 12.00pm, 2.00pm to 5.00pm & 8.00pm to 10.00pm
Mayfair Shops.....	9.00am to 9.00pm
Medical Centre.....	9.00am to 11.00am & 4.30pm to 6.30pm(For medical emergencies only please dial 911 or 999)
Tour & Travel Office.....	9.00am to 12.00pm & 3.00pm to 5.00pm
Voyage Sales.....	10.00am to 12.00pm and 3.00pm to 5.00pm
Play Zone (2 - 7 years).....	9.00am to 12.00pm, 2.00pm to 5.00pm,6.00pm to 11.00pm
Teen Zone (8 - 17 years).....	10.00am to 12.00pm, 2.00pm to 5.00pm,6.00pm to 11.00pm

DRESS REQUIREMENT: FORMAL

Formal: Dinner jacket, tuxedo or dark suit with tie for gentlemen. A range of gentlemen's formal wear is available to hire on board ship. Evening or cocktail dress for ladies. Please note that after 6.00pm, shorts and blue or worn denim (for men and women); sandals and sleeveless tops (for men) are not considered appropriate within the ship. Any guests wishing to dress more casually are welcome to dine in the Kings Court buffet on deck 7 and relax in the Winter Garden, but should not use other areas within the ship, including our Alternative Dining Restaurants, out of respect for their fellow guests.

ESTA - ENTERING THE USA ON THE VISA WAIVER PROGRAMME

Passport holders of the following nationalities must hold an ESTA electronic System for Travel Authorization) which is required by United States Customs and Border Patrol for those guests wishing to enter the United States under the Visa Waiver Programme.

Andorra, Australia, Austria, Belgium, Brunei, Czech Republic, Denmark, Estonia, Finland, France, Germany, Greece, Hungary, Iceland, Ireland, Italy, Japan, Latvia, Liechtenstein, Lithuania, Luxemburg, Malta, Monaco, The Netherlands, New Zealand, Norway, Portugal, San Marino, Singapore, Slovakia, Slovenia, South Korea, Spain, Sweden, Switzerland, United Kingdom. You can apply for an ESTA by going online to <https://esta.cbp.dhs.gov>; there is a charge of \$14 for processing and authorisation (plus standard internet charges apply when using the ship's internet facilities). When you have received confirmation, simply print the confirmation page and place it with your passport. Should you require any assistance please see the Internet Manager in ConneXions Room 1. If you are a passport holder of the above nationalities and in possession of a valid US visa (sticker label) you are not required to be in possession of an ESTA.

CUNARD WHITE STAR LUGGAGE SERVICE

You are able to make arrangements to have "White Star Luggage Service" to transport your luggage home directly from QUEEN MARY 2 in New York. This service is provided through DHL for guests disembarking in New York on Friday 16 May 2014. To register and apply for this service, please speak to our White Star Luggage representative who will be available at the White Star Luggage desk located on deck 2, B stairway, starboard side by the Royal Court Theatre from 3.30pm - 4.30pm today. All DHL arrangements for Guests disembarking in New York on Friday 16 May 2014 need to be made by 11.30am on Monday 12 May 2014.

PLANETARIUM FILMS

The planetarium films include high-speed sequences which are not considered suitable for guests suffering from epilepsy or nervous disposition. For safety reasons, the entire audience must be seated prior to commencement, therefore there is no entry into Illuminations once the planetarium film has started. As seating for planetarium films is limited to 150 people per showing, tickets are required. Please collect a complimentary ticket in advance of the showing. Tickets for today are available from 9.00am at the ConneXions desk on deck 2 until supplies have been exhausted. Please be aware that, whilst we do our best to avoid disappointment, due to the complex mechanics of the planetarium dome, shows may be cancelled at short notice.

DECK MAINTENANCE - SWIMMING POOL CLOSURE

The Minnows pool on deck 6 aft will be closed until further notice. This is part of our ongoing safety maintenance schedule. We apologise in advance for any inconvenience and thank you for your understanding.

Sunday 11 May 2014

DISCOVER...

...getting the most from your voyage

In today's Discover... we look at ways you can make the most of your time with us. Enjoy an exciting game or two in the Empire Casino, learn the secrets of the art world, or join us for our interesting H.Stern Seminar...



PERFUME PARTY

Join your on board perfume specialists today for our perfume party, allowing you to make some great savings of up to 20% off with our tax and duty free prices travel sets, coffrets, duos, skin care, cosmetics and more. We also offer an exclusive free gift when you buy any two 100ml fragrances 9.00am - 1.00pm

GORGEOUS GIFTWARE

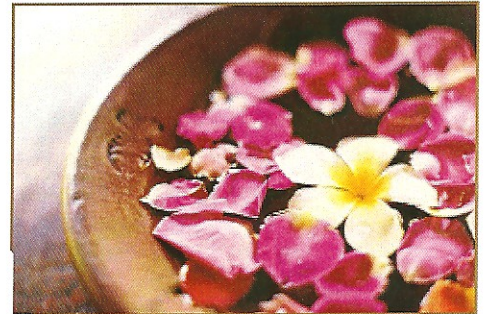
Another superb promotion not to be missed. Crystal frames, tile paintings, chryscraft figurines, trinkets, jewellery boxes, fancy pens and mini clocks, all at amazing tax and duty free prices. Visit the Mayfair shops this afternoon and treat yourselves. 2.00pm - 6.00pm.



H.STERN SEMINAR

Our H.Stern Manager Mauro heads this informative Seminar. Come and find out why this jewellery adorns top Celebrities in events such as the Oscars.

CANYON RANCH Spa Club®



REFLEXOLOGY

50 minutes NOW \$99.00

Only 8.00am, 9.00am and 6.00pm,
7.00pm appointments only

BLACK OLIVE COFFEE STONE SCRUB FULL BODY

50 minutes NOW \$120.00

SJAL DIAMOND FACIAL

80 minutes NOW \$189

FEET SO SOFT PEDICURE

50 minutes NOW \$99.00

Schedule any colour service and receive a complimentary Moroccan oil hair treatment

Visit the spa on deck 7 forward or dial
27008/9 from your stateroom.

WINE TASTING

CELEBRATION OF WINE HISTORY WITH SOME NEW FRONTIERS

We are delighted to invite you to a wine tasting seminar, a taste of different grape varietals from different parts of the world. Hosted by our expert Sommelier team, the event will be entertaining and educational; featuring some of our wine cellars finest selections. There will be a nominal fee of \$40.00 (plus 15%) per person. Please sign up with your Restaurant Sommelier or phone the wine line on 22062.

Tomorrow Monday 12 May at 3.00pm, Britannia Restaurant, Deck 2.



ART SEMINAR: THE ART OF INVESTMENT



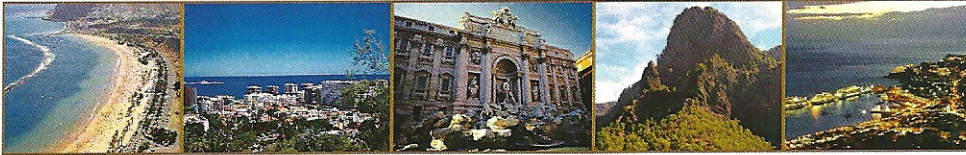
Join your on board art experts as we talk you through what you should look out for when investing in today's contemporary art market. We explain the fine art publishing process, the differences between original paintings and limited editions and the finer points on trends, styles and values. Clarendon Fine Art is one of Mayfair's most prestigious galleries so come and make the most of your expert's advice and guidance on how to invest in an artist with great potential. Join us in the best gallery at sea after the talk to view works by our international portfolio of award winning artists. **At 3.00pm in the The Art Gallery. Deck 3L Starboard, Stairway C or D.**

with great potential. Join us in the best gallery at sea after the talk to view works by our international portfolio of award winning artists. **At 3.00pm in the The Art Gallery. Deck 3L Starboard, Stairway C or D.**

WHISKY LOVERS' GET-TOGETHER

Explore the exciting world of Scotch Whisky! Sample some of Scotland's finest Single Malts, learn about their production and history whilst sharing your own Scotch tales! Please register in advance by telephoning the Commodore Club on Ext. 29000 or by contacting any Bar server. A nominal charge of \$26.50 plus 15% service per person will apply. **Tomorrow Monday 12 May at 3.00pm in the Commodore Club, deck 9, A stairway**

MEDITERRANEAN SAILINGS



In 2015 **QUEEN VICTORIA** will spend her time in the Mediterranean, sailing from one of four historic and exciting cities – Rome, Athens, Venice or Istanbul. Savour the sights of the ancient cities of the Mediterranean. The echoes of mankind's greatest civilisations linger here, from the ancient Greek ruins of Athens to the imperial glory of Rome. Pleasure in the timelessness of a Cunard Queen at the pace you desire.

Her Fly-Cruise programme offers you the maximum amount of time in the sun exploring this wonderful region. Choose from seven, 14 or 21-night holidays, including three maiden ports of call. Rapallo offers an effortlessly cool nostalgic air, with its bright blue changing cabins lining the palm fringed beach.

The Croatian city of Zadar, meanwhile, overlooks the Adriatic. Trieste in Italy is undoubtedly an undiscovered gem. However you chose, whichever voyage suits best, an extraordinary journey is certain to follow.

For more details, visit Petra or Yoyo at the Voyage Sales Office on Deck 2, opposite the Royal Court Theatre (Port side) or telephone extension 22347 or 22339 to arrange a private appointment.



COMPLIMENTARY GAMING LESSONS

With your friendly Casino Host Kati. Come in at 2.00pm to learn all about our exciting table games on offer and join in on the experience of free play. Take advantage of our 1 hour only \$1.00 madness offer on selected tables directly after gaming lessons.

SPECIAL OFFER ON FRAMES AND ALBUMS

'Images' photo gallery offers a wide selection of frames and albums. Buy them at the Special discount prices. Hurry! Offer valid until stocks last.

3 QUEENS PHOTOS

The ultimate selection of the breathtaking photos from Rendezvous of the 3 Queens in Southampton are available, photos that can complete your Voyage so that you have these memories to last. Stop by the Photo Gallery on deck 3L for more details.

THE STUDIO - IT'S ALL ABOUT YOU!

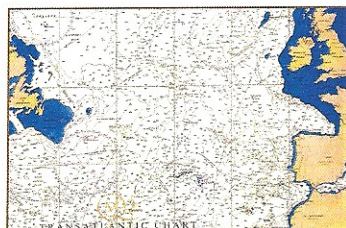
Book your very own private photo session. Call the Photo Gallery on 23089 or visit us on Deck 3L Aft for an appointment.

LOG BOOK AND ADDRESS BOOK

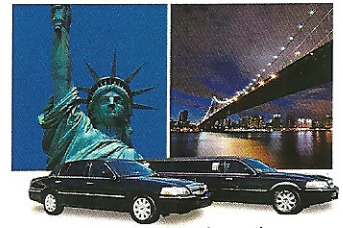
Keep track of new friends and fun on board with our address book or Cunard Log Book. Choose from a handy way to store phone numbers and address details, complete with a nautical glossary; or opt for the log book; idea for recording noteworthy events and names as a reminder for when you return home, with beautiful interior and exterior shots of Cunard ships and convenient labelling to note the weather and sea state each day.

TRANSATLANTIC CHART

A fantastic way to commemorate your Transatlantic crossing with us on board **QUEEN MARY 2**. This chart is a reproduction of the Admiralty chart and is specifically designed to enable you to plot our exact route. Coordinates will be provided between 4.00pm and 6.00pm on the last sea day in the **Bookshop, deck 8, A stairway.**



CHAUFFEUR CAR SERVICE



Continue your journey in style with a private car arranged by Cunard. Choose from a sedan, limousine or passenger van to transfer you from the pier direct to your destination. Stop by the Tour Office to secure your reservation.

Tour Office, deck 2, Grand Lobby.

LEARN ABOUT SOME PHOTO EDITING OPTIONS

Join your iStudy tech Tutor "Mitch" today for an overview of photo editing software for Windows and Apple computers or for Apple iPads. Over the coming days a range of workshops are available for photo editing on all these devices. Pick up an iStudy flyer for fuller details of the programme. Bookings are welcomed.

ConneXions room 6, deck 2, A stairway.

COMMODORE CLUB



Majestically overlooking the bow of **QUEEN MARY 2** and providing glorious panoramic views as you sail towards the horizon. An extensive selection of Martinis are available and you may even be tempted to try our Martini Mixology or Whisky Tasting classes. Please see your friendly bar server and enquire about our exclusive Molecular Martinis. A signature of Cunard Line, these Martinis have been created on board by our professional mixologists for your enjoyment.

The Commodore Club, deck 9, A stairway